

Contents

| | |
|-------------------|----|
| Auction Lots..... | 2 |
| Images..... | 11 |

Robson Lowe Sale of The William Britton Stitt BWI Collection, 12 May 1970

Auction Lots

| img | Lot | Jamaica | E.Est; C.Cat GBP£-S | Real £-S |
|-----|-----|---|------------------------|-------------|
| | 330 | 1756-1817 E.L. mostly to Scotland with interesting contents on Estate business and Slavery; three have different ship's endorsements but no h.s. of origin. (5) | 17 | 11 |
| img | 331 | 1774 and 1789 E.L. to London both endorsed "By the Packet" and showing, on the reverse, two different types of "IAMAICA", very *** (J2 and J3). | 18 | 21 |
| | 332 | 1776 an interesting letter from Mt. Stewart to Scotland and 1804 E.L. to Philadelphia showing different types of unframed "SHIP", ***; the first is a little soiled | 15 | 7.50 |
| | 333 | 1780 E.L. from Kingston to England (a little ragged and part of outer page missing) showing unframed "In all" and, on the reverse, "JAMAICA" ** (J1). The writer offers condolences to the addressee on the death of her husband whilst commanding a battery in Georgia | 15 | 9 |
| img | 334 | 1781 E.L. to London, a little soiled, showing on reverse "JAMAICA" ** (J1). The writer gives a list of prices current and mentions the loss of many ships in a hurricane. | 17 | 12 |
| img | 335 | 1785 E.L. to Edinburgh - per Grantham Packet" showing "IAMAICA" (J2), across join and "SAV LA MAR" ** to ***. | 25 | 16 |
| img | 336 | 1788 E.L. from London to Jamaica showing, across join, "KING/STON" ** to *** (T1a). | 20 | 13.50 |
| img | 337 | 1791 E.L. to London showing on the reverse "IAMAICA" (J2), across join, and "LACOVIA" (T2), ** to ***. | 35 | 26 |
| img | 338 | 1793 and 1797 E.L. to the same addressee in Dumfries showing, on the reverse "SPANISH/TOWN" * to **, both types. | 25 | 0 |
| | 339 | 1795 E. to Edinburgh, a little ragged and torn, showing across join "IAMAICA" (J2) ** and "MONTEGO/BAY" almost *** | 15 | 13 |
| | 340 | 1798 E.L. to Ireland endorsed "By HM Cutter Wm. Pitt" and showing, on the reverse, a very faint "JAMAICA" | 15 | 11.50 |
| | 341 | 1799 E.L. to Edinburgh showing, across the join, "JAMAICA / AUG 4. 99" (J4) and "FALMOUTH" (T2) | 10 | 10.50 |
| | 342 | 1801 E.L. to Edinburgh showing, on the reverse, "FALMOUTH" ** to *** (T2) and a faint "JAMAICA" d.s. (J5) | 7 | 5 |
| | 343 | 1803-04 E.L. to GB each showing, on the reverse, "JAMAICA" d.s. mostly ** to *** (J7); one has been re-directed and shows a number of GB transit marks. (3) | 15 | 10 |
| | 344 | 1805 and 1806 E.L. to Edinburgh each showing, mostly across join, "FALMOUTH / JA" ** to *** and "JAMAICA" large fleuron d.s. * to ** (F1) | 10 | 7 |
| | 345 | 1806-23 E.L. to G.B. each showing, on the reverse, different types of the "JAMAICA" fleuron d.s. * to ** (F1, 3a, 4, 5 (2) and 5a (2)). One has disinfection slits. (7) | 25 | 15 |
| | 346 | 1807-21 E.L. to GB each showing. on the reverse, different types of "JAMAICA" fleuron d.s.. mostly to ** to *** and one superb (F1, 2a, 4 and 5a (2)). (5) | 25 | 30 |
| | 347 | 1807 E.L. to Edinburgh containing the Annual Return of Slaves and Stock on the Dundee Estate showing, on the reverse, two strikes of the "JAMAICA" fleuron d s. (F1) and "FALMOUTH/JA" * to ** | 10 | 9.50 |
| | 348 | 1808-28 E.L. mostly to Scotland, all showing, on the reverse, "JAMAICA" fleuron d.s. in different types or sub-types, * to ** (F1, la, 3a, 5, 5a (3) and 6). (8) | 25 | 15 |
| | 349 | 1808-20 E.L. to GB showing, on the reverse, different types of "JAMAICA" fleuron d.s. ** to *** (Types F1 and the scarce la, 2 and 5a). (4) | 30 | 31 |
| | 350 | 1809-37 E. and E.L. showing "JAMAICA" fleuron d.s. (2 different), and unframed "MORANT-BAY", "FALMOUTH", "SPANISH -TOWN/JA" (2) and an albino "SAVANNA LA MAR/JA", * to ** (5) | 16 | 14 |
| img | 351 | 1814 creased E. to London showing the oval framed "Ship Letter / Crown / JAMAICA", ** to *** | 20 | 27 |

Robson Lowe Sale of The William Britton Stitt BWI Collection, 12 May 1970

| | Lot | Jamaica | E.Est; C.Cat | Real |
|-----|-----|--|--------------|-------|
| img | 352 | 1819-20 three very interesting letters from a Naval Officer on "H.M.S. Iphigenia" to members of his family in London and Surrey, with details of events, the yellow fever and its remedies, casualties in the Army, etc. No marks of origin. (3) | 10 | 6 |
| img | 353 | 1822 E.L. to Edinburgh showing, across the join, "GREEN-ISLAND / JA" ** to *** and "JAMAICA" fleuron d.s. * to ** (F5a). | 15 | 15.50 |
| | 354 | 1824-25 E.L. all from the same correspondence to Edinburgh, all but one showing, across the join, "SAVANNA LA MAR" * to ** (T4) and with Packet endorsements for "Kingfisher", "Redpole", "Hope", "Lady Wellington", "Countess of Chichester" and "Princess Elizabeth" | 20 | 19 |
| img | 355 | 1824 E.L. to Kingston, a little stained, showing across the join, a superb "PORT MARIA" (T4a). | 20 | 25 |
| | 356 | 1824 E.L. to Kingston showing, across join, "ANNOTTO BAY / JA" and 1839 E.L. to Scotland with, also across join, "CLARENDON", a little stained or soiled | 17 | 14 |
| | 357 | 1825-46 E. and E.L. each showing c.d.s. of Kingston (four different types), mostly **, one with manuscript forwarding endorsement. (6) | 10 | 8.50 |
| | 358 | 1826 and 1838 E.L. to Edinburgh, the first showing, across the join, "MONTEGO BAY / JA" , and the other with "MONTEGO BAY" (T4b), ** to *** both also show Kingston c.d.s. | 12 | 9 |
| img | 359 | 1826 E.L. to York "Per Brig Lydia via Liverpool" showing, across the join, framed "SHIP LETTER/LIVERPOOL" and unframed "COMMERCIAL ROOMS" ** to *** (CR6). | 15 | 21 |
| img | 360 | 1829 E. to Ayr showing, across the join. "MANCHIONEAL" very ***, in reddish brown (T4a) and "JAMAICA" fleuron d.s. * to ** (F6). | 30 | 22 |
| | 361 | 1830-63 E., E.L. and covers, a selection all showing, on the reverse, different c.d.s. of Kingston (seven different types); many ** to *** (13) | 12 | 16 |
| | 362 | a very similar lot. [1830-63 E., E.L. and covers, a selection all showing, on the reverse, different c.d.s. of Kingston (seven different types); many ** to ***] (13) | 12 | 9.50 |
| | 363 | 1834 and 1835 E.L. to Scotland each showing, on the reverse, c.d.s. "KINGSTON / JAMAICA" * to **, (K4) and albino h.s. of "MAY HILL" and "MORANT BAY" | 10 | 8 |
| img | 364 | 1838 E.L. to England showing the unframed d.s. "JAMAICA / PAID" ** to *** (PD3). | 15 | 11 |
| | 365 | 1839-56 E.L. and cover, a selection showing c.d.s. of Clarendon, Falmouth (3), Goshen, Alexandria (2), St. Arms Bay, Old Harbour, Porus, Morant Bay, Montego Bay and Spanish Town (2), many ** to ***. (14) | 25 | 23 |
| | 366 | 1839-55 E., E.L. and F. mostly to England showing c.d.s. of Alexandria, Falmouth, Clarendon. in reddish brown, Chapelton, Goshen, Dry Harbour (2, one with inverted date plug), Mandeville, May Hill, Rodney Hall and Spanish Town (2 different); mostly ** (12) | 20 | 23 |
| | 367 | 1839 EL. to Yorkshire with a superb strike of the very rare "PAID/KINGSTON/ JAMAICA" c.d.s. (PD4) | 25 | 38 |
| img | 368 | 1840 E.L. from Ayr to Manchester, Jamaica showing the c.d.s. "KINGSTON/SHIP LETTER" ** (SL3). | 25 | 32 |
| img | 369 | 1840 E.L. to Bermuda (couple of worm holes) showing, on the reverse, a very *** strike of the c.d.s. "COMMERCIAL / BUILDINGS / KINGSTON / JAMAICA" (CR8) | 25 | 32 |
| | 370 | 1844-54 E.L. with various c.d.s. and manuscript endorsements of "Too late", "Redirected to" and "Redirected to Mayhill P.O." | 12 | 8 |
| | 371 | 1844-51 E. and E.L.. a selection with c.d.s. of Dry Harbour, Falmouth, Flint River, Green Island, Savannah-la-Mar, Spanish Town and Vere, ** to very *** (7) | 25 | 22 |
| img | 372 | 1844 E.L. from Kingston to May Hill showing the h.s. "6" *** (TP1). | 10 | 11.50 |
| | 373 | 1845 E.L. from Kingston to May Hill showing h.s. "6" ** to *** and 1851 cover to London with superb "1/-" (TP 1 and 2) | 12 | 21 |
| | 374 | 1847-61 E. and E.L., a selection showing c.d.s. of Bath, Black River, Falmouth, Goshen (also showing a Liverpool "Pin" cancellation, in green, struck on arrival), May Hill (4), Mandeville, Port Maria and Spanish Town (2), mostly ** (12) | 20 | 18 |

Robson Lowe Sale of The William Britton Stitt BWI Collection, 12 May 1970

| | Lot | Jamaica | E.Est; C.Cat | Real |
|-----|-----|---|--------------|-------|
| img | 375 | 1848 E.L. from Kingston to May Hill showing a superb h.s. "6" (TP1), the Inland rate for 60-100 miles and, on the reverse, c.d.s. of both towns. | 10 | 11.50 |
| | 376 | 1851 E. to London showing, on the reverse, c.d.s. "MANCHIONEAL / JAMAICA" * to ** (P2a). Rare-Foster records only one | 7 | 5.50 |
| | 377 | 1852-54 E.L. each showing c.d.s. "JAMAICA/PAID" (PD 5) and also c.d.s. of "LUCEA- JAMAICA" (a little torn), "ST ANNS-BAY" and "DUNCANS"; mostly ** to ***. (3) | 15 | 0 |
| img | 378 | 1854 E.L. to Madeira showing c.d.s. "KINGSTON-JAMAICA / PAID" and unframed "RETURNED/FOR/POSTAGE" ***, in red, with "1/4 More" inserted in manuscript (similar to D3 but in sans serif letters). | 25 | 26 |
| | 379 | 1857-64 E., E.L. and F. each showing c.d.s. "JAMAICA / PAID", one also shows C.d.s. "COSHEN" and another has single ring "GREEN ISLAND"; mostly ** to *** | 20 | 0 |
| img | 380 | 1857 cover (opened out) and 1868 E. to France showing Anglo-French accountancy marks "GB / 1F 60c" and "GB/2F-" and the last with "JAMAICA/SHIP LETTER" (SL5); both also show, on the reverse, "KINGSTON/JAMAICA" c.d.s. (two different types); mostly ** to *** | 25 | 29 |
| img | 381 | 1858 EE to Bordeaux showing the Anglo-French accountancy mark "GB/2F" and c.d.s. "ANGL./AMB. CALAIS L." and, on the reverse, framed cachet "FORWARDED BY BARCLAY & CO. / KINGSTON / JAMAICA" ** to ***, in red, partly overstruck by Paris transit c.d.s. | 17 | 21 |
| | 382 | 1864-72 E. and E.L. showing c.d.s. of Green Island, Black River and Vere, the first also shows c.d.s. "JAMAICA/PAID", Mostly ** to *** (3) | 12 | 10 |
| | 383 | GB used in Jamaica: "A01" on 1d. rose-red (3), 4d. rose (11, with two pairs), 6d. lilac (8, with a pair) and 1/- green (2), also three E. one with 4d. rose, one with 6d. and two overlapping 1d. rose-red and the third with a badly creased 6d. showing "TOO LATE" handstamp (29) | 45 | 42 |
| | 384 | GB used in Jamaica: "A28" on 4d. rose, "A39" on pair 6d. lilac, "A31" on 1d. rose-red, "A41", "A48", "A51", "A53", "A56", "A61", "A72" and "A77" all on 4d. rose and "A64" on 1d. rose-red, ** to *** strikes but some stamps not fine. (13) | 35 | 38 |
| | 385 | GB used in Jamaica: "A34", "A35", "A39", "A42", "A43" and "A55" all on 6d. lilac, mostly fine and all with ** to *** strikes | 25 | 60 |
| | 386 | GB used in Jamaica: "A37" on pair of 6d. on piece and "A75" on pair of 4d. both *** | 18 | 28 |
| | 387 | GB used in Jamaica: "A39", "A47", "A51", "A57", "A64" and "A73" all on 4d. rose, good to fine and with ** to *** strikes | 14 | 24 |
| img | 388 | GB used in Jamaica: 1859 large piece with 1d. (2) and 4d. cancelled "A44" * to ** and another piece with 4d. cancelled "A53" **. | 20 | 21 |
| img | 389 | GB used in Jamaica: 1859 E. from Montego Bay to Spanish Town with 6d. and 1d. pair MA-MB cancelled "A57" * to **, E. a little stained and creased. | 25 | 27 |
| img | 390 | GB used in Jamaica: 1859 E. from Rodney Hall to Kingston with wing-margin 4d. cancelled "A71" *** 1859 cover from St. Ann's Bay to Spanish Town with 6d. cancelled "A73" ** and a part entire with 4d. cancelled "A78" *. | 30 | 27 |
| img | 391 | GB used in Jamaica: 1862 E.L. to Kingston bearing 6d. cancelled "A49" and showing "LILLIPUT / JAMAICA" c.d.s., [dated FE 11 62]**. | 15 | 85 |
| | 392 | GB used in Jamaica: 1898 cover to England bearing G.B. ½d., 1d., 1½d and 2d. with c.d.s. cancellation "KINGSTON/JAMAICA" and showing framed "PAQUEBOT" ** to *** | 7 | 4.50 |
| | 393 | 1860-63 watermark pineapple 1d. pair, 2d. (2), 4d. and 6d. all imperforate plate proofs overprinted "SPECIMEN" and 1/- yellow-brown perforated and overprinted "SPECIMEN". (7) | 20 | 52.50 |
| | 394 | Withdrawn | | 0 |
| | 395 | a similar lot to 393.[1860-63 watermark pineapple 1d. pair, 2d. (2), 4d. and 6d. all imperforate plate proofs overprinted "SPECIMEN" and 1/- yellow-brown perforated and overprinted "SPECIMEN".] but 1d. is a single and there is one 2d. only(5) | 15 | 16 |

Robson Lowe Sale of The William Britton Stitt BWI Collection, 12 May 1970

| | Lot | Jamaica | E.Est; C.Cat | Real |
|-----|-----|--|--------------|-------|
| img | 396 | 1860 Pineapple: 2d., 3d. and 1/- unused and diagonally overprinted "SPECIMEN" in serifed capitals and 6d. with similar overprint but vertical | 15 | 21 |
| | 397 | 1860 Pineapple: 1d. blue one marginal overprinted "specimen" in ms. and 3d. and 1/- handstamped "SPECIMEN" in very small type | 12 | 16 |
| | 398 | 1860 Pineapple: 1d. shades (4), 2d. (2), 3d. (5), 4d. (2) and 1/- purple-brown fair to fine, all unused except four. (14) | 20 | 0 |
| | 399 | 1860 Pineapple: 1d. blue, a very fine mint block, very scarce in multiples. [wing at left] | 20 | 0 |
| | 400 | 1860 Pineapple: 1d blue, a strip of four and 1d. pale blue. a strip of six fair to fine | 12 | 0 |
| img | 401 | 1860 Pineapple: 1d. pale blue bisected and tied on 1865 entire from Kingston to Malvern P.O.. very fine. [Kingston cds dated JU 1 65] | 25 | 30 |
| img | 402 | 1860 Pineapple: 1d. blue bisected and cancelled "A75" on damaged 1868 envelope from Savanna-La-Mar to Spanish Town. [Spanish Town cds dated FE 15 68] | 20 | 24 |
| img | 403 | 1860 : 2d. a large die proof in black on glazed card dated "Aug. 29-60". | 40 | 37 |
| img | 404 | 1860 Pineapple: 4d. brown-orange and 4d. red-orange both mint, and fine for these stamps. | 20 | 23 |
| img | 405 | 1860 Pineapple: 6d. dull-lilac and 6d. grey-purple both fine mint. | 14 | 21 |
| img | 406 | 1860 Pineapple: 6d. deep purple superb mint, rare (Now Cat: £65). | 30 | 25 |
| img | 407 | 1860 Pineapple: 1/- yellow-brown and 1/- dull brown very fine unused with trace of original gum. | 25 | 18 |
| img | 408 | 1860 Pineapple: 1/- dull brown variety "\$" for "s" in "SHILLING" very fine. Cat. £50. | 30 | 26 |
| | 409 | 1860-1910, a small selection of stamps with inverted watermark comprising 1860 1d. and 3d. (2); 1870-83 CC 1d., 2d., 6d. and 1/-; 1883-97 CA 1d., 2d. and 4d. (2); 1889 2d. green; 1900-01 1d. Falls (5); 1903 CA 'd. and 1910 MCA 3d. pale purple on yellow; majority used and fair to fine (19) | 12 | 16 |
| | 410 | 1870-83 CC: perf. 14 ½d. (2), 1d., 2d. (2) 4d. (one corner damaged) and 1/-, also perf. 12½ 2/- and 5/- all good to fine mint. (9) | 11 | 7.50 |
| | 411 | 1870-83 CC: ½d (2) and 1d. to 6d., also 1/- in a pair and perf. 12½ 2/- and 5/- all fine mint. (1 1) | 18 | 11.50 |
| | 412 | 1870-83 CC: ½d (3), 1d., 2d. (2) 6d. and 1/- shades (2), also perf. 12½ 2/- (2) and 5/- good to fine unused or mint. (12) | 14 | 7.50 |
| | 413 | 1870-83 CC: ½d to 1/-, a fine mint set. (7) | 15 | 17.50 |
| | 414 | 1870-83 CC: 2d. rose, a mint pair with interpanneau margin between, rare thus, slight foxing on some perfs. | 10 | 9 |
| img | 415 | 1870-83 CC: 1/- dull brown, a mint corner block [top left] with control [current] number, one stamp variety "\$" for "s" in "Shilling" | 50 | 67.50 |
| img | 416 | 1877 large die proof in black on glazed card of the 1d. value dated "May 21 1877". | 30 | 32 |
| | 417 | 1877 large die proof in black on glazed card of the 1d. value dated "May 28 1877" | 30 | 32 |
| | 418 | 1883-1945. a collection of Specimen stamps including 1883-97 CA values to 6d.; 1903-04 CA 5d.; 1905-11 MCA 5/-; 1905-11 Q.V. types 4d. black on yellow, 1/- black on green and 2/- purple on blue; 1912-20 values to 2/-; 1919-21 MCA ½d to 10/-; 1921-29 Script ½d to 10/- and a few later, also Officials and Postal Fiscals (SG F7 to F9) (87) | 27 | 31 |
| | 419 | 1883-1929. a selection all in fine mint blocks of four comprising 1883-97 CA ½d shades (2), 1d. carmine, 3d. shades (2), 4d. and 6d. shades (2); 1889-91 1d. to 2½d; 1900-01 Falls both colours: 1903-04 CA ½d to 5d.; 1905-11 3d. pale purple on yellow, 6d. Lilac, 6d purple and 1/- black on green; 1911 2d Grey; 1912-20 ½d to 1/-; 1921 script 8d and 1929 1d (2) and 1½d (2) (144) | 26 | 17 |
| | 420 | 1883-97 CA: ½d (3), 1d. blue, 1d. rose (3), 1d. carmine (2), 2d. rose, 2d. grey, 2d. slate, 3d. shades (13, including blocks of four and six), 4d. (6), 6d. (4), 1/- (3), 2/- (3) and 5/- (4 with a vertical plate number pair), all good to very fine mint. (45) | 18 | 29 |

Robson Lowe Sale of The William Britton Stitt BWI Collection, 12 May 1970

| | Lot | Jamaica | E.Est; C.Cat | Real |
|-----|-----|--|--------------|-------|
| img | 421 | 1883-97 CA: ½d to 5/-, a fine mint selection including all shades except 4d. red-orange and a few duplicates. also 1889-91 1d. (4), 2d. (3) and 2½d (4) and 1890 2½d on 4d. An attractive lot. (40) | 18 | 16 |
| | 422 | 1883-97 CA: 1d. carmine, a strip of six from top of sheet with margins and plate number; 4d. red-brown, a strip of six with plate number and imprint and a block (3X2) with control number, also 6d. orange-yellow, a corner block with plate number, all fine mint (22) | 10 | 6.50 |
| img | 423 | 1883-97 CA: 4d. red-orange fine unused with trace of original gum, also 4d. red-brown mint for comparison. | 20 | 17 |
| img | 424 | 1883-97 CA: 1 /- brown variety "\$" for "s" in "SHILLING" unused with some original gum, slight central fault. Cat. £70. | 25 | 26 |
| | 425 | 1891 die proof of the 2½d value tablet marked "AFTER HARDENING" and dated "5 JAN 91", also a similar die proof of a 1d. value tablet dated "22 JAN 97" and marked "Jamaica" in red ink | 20 | 30 |
| | 426 | 1890 "TWO PENCE/HALF-PENNY" on 4d.. a plated study of the first setting of ten and the second setting of twelve complete mint, well written up and with printed diagrams of all three settings. One stamp is the error "PENNK". (22) | 25 | 24 |
| img | 427 | 1890 "TWO PENCE/HALF-PENNY" on 4d., variety surcharge double fine mint. With R.P.S. Certificate (1934). | 12 | 13 |
| img | 428 | 1900-01 Llandoverly Falls 1d. red, a mint imperforate plate proof, unwatermarked. | 20 | 20 |
| img | 429 | 1900-01 1d. red (2) and 1d. black and red (2); 1903-04 ½d to 5d. two sets, also ½d with inverted watermark and a set in blocks of four; 1905-11 MCA values to 6d. with some duplication including six blocks of four, also 5/- (2).. (85) | 17 | 18 |
| img | 430 | 1903-04 Arms CA ½d an imperforate watermarked colour trial in purple and blue. | 20 | 15 |
| | 431 | 1903-04 Arms CA 1d., a block of four, 1d. a block (3X3) and 2½d a strip of three all with one stamp showing the "SER . . ET" error, also 1905-11 MCA 2½d a block of four and a single showing the same variety. (12) | 5 | 6.50 |
| img | 432 | 1903-04 Arms CA 5d. grey and yellow a mint pair, one stamp variety "SER . ET" rather heavily mounted and slight foxing very scarce. | 75 | 77.50 |
| img | 433 | 1905-11 Arms MCA 5d. grey and orange-yellow, a block (3X3), the centre stamp variety "SER . . ET" mint but slightly climatically stained. Cat. £119. | 70 | 75 |
| | 434 | 1905-11 MCA Q.V. types 3d. to 2/-, the complete set with all shades fine mint. (16) | 14 | 13 |
| img | 435 | 1905-11 MCA Q.V. 1/- black on green variety "\$" for "s" in "SHILLING" fine mint, minute surface fault between "i" and "L" of "SHILLING". | 60 | 62.50 |
| | 436 | 1912-20 MCA ½d to 5/- complete with shades and a few duplicates, all fine mint. (36) | 8 | 9 |
| | 437 | 1912-20 MCA large die proofs in black on glazed card for the frames of unissued 2/6 and 10/- values, without markings and undated | 20 | 26 |
| | 438 | 1916-19, a collection of the "WAR STAMP" issues mint and used including blocks of four or larger, much duplication, with many minor varieties. (167) | 7 | 8.50 |
| | 439 | another small collection of "WAR STAMPS" all mint except two and including some major varieties with S.G. 72c., 73c. and 74d. (2). (36) | 12 | 17 |
| img | 440 | 1919 imperforate colour trials for the pictorial issue comprising 1½d in deep blue; 2d. in claret and blue in a pair overprinted "SPECIMEN"; 3d. in brown and green and 2/- in green and brown. also a similar proof of the central vignette in blue of the 6d. Value issued in 1922 (6) | 25 | 31 |
| | 441 | 1919-21 Pictorials MCA 5/- and 10/- (2); 1922-29 Script 2d., 2½d , 4d. (2), 6d.. 1/- (2) 2/- (2). 3/- (2) and 10/- all overprinted "SPECIMEN" and 1932 2d. and 6d.; 1935 Jubilee; 1937 Coronation and 1938 values to 10/- all perforated "SPECIMEN". (34) | 20 | 12 |
| | 442 | 1919-21 Pictorials MCA ½d to 10/- with some shades including both 5/- all fine mint, (17) | 10 | 11 |
| img | 443 | 1919-21 Pictorials: the unissued MCA 6d. Abolition of Slavery in red and slate green mint and overprinted "SPECIMEN". | 50 | 52.50 |

Robson Lowe Sale of The William Britton Stitt BWI Collection, 12 May 1970

| | Lot | Jamaica | E.Est; C.Cat | Real |
|-----|-----|--|--------------|-------|
| img | 444 | 1919-21 Pictorials: the unissued 6d. Abolition of Slavery - as last but Script CA watermark. | 50 | 40 |
| | 445 | 1921 Script 6d. (2); 1921-29 Script pictorial issue complete with shades and a few duplicates; 1927-32 complete and 1935 Jubilee set all fine mint. (55) | 13 | 7 |
| | 446 | 1923 Child Welfare set in blocks of four and two single sets, all mint. (18) | 6 | 9 |
| | 447 | 1935 Jubilee 1½d and 6d. in corner blocks of four showing the extra flagstaff variety | 6 | 11 |
| | 448 | Booklets: 1922-46 a collection of exploded booklets all artistically arranged and mounted on album pages. An attractive lot. (Stamps 176) | 8 | 40 |
| img | 449 | Official Stamps: 1890 ½d green with both "i"s missing from the overprint, fine and scarce. Cat. £28. | 15 | 15.50 |
| | 450 | Postal Fiscals: 1855-94 a selection of the Revenue stamps with many used postally (nine pieces) and forty unused including 1858 1/- and 5/- and 1865 1d. (53) | 18 | 9 |
| img | 451 | 1865 die proof of the 1d. in black on glazed card marked "BEFORE HARDENING" and dated "Feb. 1, 1865" [7036 top right & initialled bottom right]also Telegraph Stamps 1879 two similar die proofs of the 3d. in black, one marked "BEFORE HARDENING", the other "AFTER HARDENING" both dated "May, 27, 1879" | 35 | 46 |
| | 452 | 1892-93 cover, one a printed type of the Jamaica Railway Co. all bearing Revenue stamps used postally including the 1858 1/- with cancellations of "A76", oval "JAMAICA / REGISTERED" and c.d.s. of Kingston, Spanish Town and Cold Spring; mostly fine, the Railway cover is damaged | 30 | 31 |
| | 453 | Postal Stationery: 1877-1938 selection of printed postal stationery including post cards (15), reply cards (10) and wrappers (7); mostly unused. (32) | 10 | 5 |
| | 454 | 1860-1956 various values selected for cancellation, with 14 pieces including Numerals (22 from A27 to A78), "KINGSTON" d.s. with many different index letters and a range of c.d.s. covering over 30 different villages or towns from Alexandria to Williamsfield; mostly part strikes (295) | 10 | 12.50 |
| | 455 | 1860-1950 (c.) cover, card, F., pieces (157) and stamps (406), a collection of cancellations including Numerals (72, covering about 30 different numbers), squared circle d.s., single and double ring d.s. Slogan and Registration marks, Street Letter Boxes (14) and some with censor marks; many ** to *** (545) | 30 | 18 |
| | 456 | 1860-1947 the fine collection of cancellations including many numeral types covering about 80 different numbers from A01 to G16 and 193 to 642 and some later c.d.s. including Street Letter Box types; mostly legible though many are part strikes. (380) | 50 | 65 |
| | 457 | 1860-95 (c.) various values to 1/- selected for cancellation, mostly with numeral types, a wide range including *** strikes of "A01", "A38", "A56" "A67", "A73", "A79", "F80", "F97" and "640". Also a few with c.d.s. or numeral cancellations of other countries, struck on arrival (66) | 15 | 23 |
| | 458 | 1865-71 1d. (11, with a pair) and 1874 3d. Revenue stamps postally used with cancellations "A49", ",462", "A66" (2) "A68" (2) "A71", "A76" (2), "F95" and "640" mostly clear strikes. (11) | 8 | 8.50 |
| | 459 | 1870-1941 cover, pieces (64) and stamps (85) with cancellations including c.d.s. "STREET LETTER BOX" of Kingston, Montego Bay and Port Antonio and many different town and village names, Registered, Paquebots, T.P.O.'s and Slogans; many to ***. (150) | 15 | 13.50 |
| | 460 | 1873-1935 cover, cards and stamps (block of four), mostly printed postal stationery with cancellations and h.s. including squared circle d.s. of Browns Town and Kingston, single ring d.s. of Half Way Tree and double ring d.s. of Constant Spring, Colonels Ridge, Balaclava and Kingston; mostly ** to *** (10) | 7 | 3.50 |

Robson Lowe Sale of The William Britton Stitt BWI Collection, 12 May 1970

| | Lot | Jamaica | E.Est; C.Cat | Real |
|-----|-----|--|--------------|-------|
| img | 461 | 1876-1908 cover bearing a variety of values with cancellations including c.d.s. of Newport, Ocho-Rios, Port Maria, Saint Anns, Santa Cruz and "STREET LETTER BOX KINGSTON / JAMAICA", squared circle "PORT ANTONIO", oval d.s. "JAMAICA/ REGISTERED" and others, many ** to *** (12) | 10 | 7 |
| | 462 | 1877-1922 cover and cards showing a variety of instructional h.s. including framed "ADVERTISED" (UN5), "TOO LATE", unframed "UNCLAIMED" (3 in two different types) and diamond framed "STREET/LETTER BOX/JAMAICA", Mostly ** to ***. (5) | 15 | 16 |
| | 463 | 1881-92 ½d (4), 1d. (20) and 2d. (2) all with part strikes of Temporary d.s. including Cave Valley, Devon and Ulster Spring (TD1), and others from Bethel Town, Pratville, Alligator Pond, Jackson Town, Bog Walk and Davis Town (types TD3 to TD6). (26) | 35 | 25 |
| | 464 | 1883 cover to U.S.A. and 1890 Colombia 2c. printed postcard from Panama to Germany each showing "JAMAICA / TRANSIT" ** to *** | 15 | 13 |
| | 465 | 1889 cover (slightly cut down) with 2d. pair cancelled "A 72"; 1896 with 2½d cancelled "G14" and 1908 bearing 1d. pair and ½d with squared circle d.s. of "CHAPELTON", | 8 | 33 |
| | 466 | 1889 1d. with duty plate in carmine cancelled "A82" and in light blue, with "KINGSTON" C.d.s., ***. (2) | 5 | 0 |
| img | 467 | 1890 cover (opened out) to New York showing the boxed d.s. "JAMAICA PAID" and, on the reverse, printed label issued by the Postmaster for Jamaica, "This Postal- Packet was contained in the Mail Bag from Kingston for New York via Port Maria, Jamaica, for despatch per S.S. "Bergenseren" which Mail bag was washed away in the "Haughton River", near SAnnotto Bay on the night of Tuesday the 18 th instant, and which was subsequently recovered" Rare | 50 | 57.50 |
| | 468 | 1894-1954 (c.) a selection of the double lined c.d.s. cancellations, with over half on piece and six covers, covering over 300 different towns or villages from Aberdeen to Yallahs; mostly legible. (400) | 12 | 15.50 |
| | 469 | 1894-1910 (c.) various values to 4d. all cancelled with rectangular d.s. (types TD8 to TD15) including Bamboo, Bartons, Belvedere, Cambridge, Constant Spring, Giddy Hall. Harry Watch, Lime Hall, Pedro Plains, Titchfield and Windsor Castle; many ** to *** though some part strikes (20) | 30 | 19 |
| | 470 | 1894-1900 (c.) a selection of ½d (6), 1d. (32) and 2½d (3) values all with rectangular framed d.s. including 23 different villages from Albany to Williamsfield, mostly legible though mainly part strikes. (TD8). (37) | 30 | 15 |
| | 471 | 1894 ½d Newspaper wrapper with additional 1d. from Kingston showing the oval framed d.s. "CEDAR VALLEY / JAMAICA" ** (TD7) and 1d. (2) off paper, one with a similar part strike and the other with rectangular framed type (TD8). (3) | 20 | 12 |
| | 472 | 1895-1940 (c.) covers and pieces (2) mostly from Jamaica to U.S.A. and London, all underpaid and franked with Postage Dues or "T" marks on arrival; cancellations include Half Way Tree, Lucea, Mandeville, Ewarton, Little River, Little London and Cross Road (10) | 10 | 0 |
| | 473 | 1895-97 covers all to the same address in London at the 2½d rate, one a little torn, with cancellations of "A58" (2), "A64" and "G14", **. (4) | 15 | 68 |
| | 474 | 1895 registered cover from Kingston to London bearing 1d. strip of six and a single, cancelled with the oval framed d.s. "JAMAICA/REGISTERED" and "EXPRESS" *** | 15 | 10 |
| | 475 | 1901-64 cover, F., piece and stamps (54) all with c.d.s. of T.P.O.'s and stations on the Jamaica Government Railway (many different); many ** to *** (73) | 20 | 27 |
| | 476 | 1902-45 covers, cards, pieces (17) and stamps (57), the collection of cancellations of the Jamaica Government Railway with many station c.d.s. and T.P.O. types, mostly legible though many are part strikes; neatly annotated and illustrated With photographs, maps, tickets etc (84) | 50 | 65 |

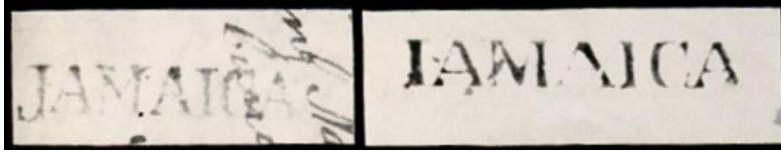
Robson Lowe Sale of The William Britton Stitt BWI Collection, 12 May 1970

| img | Lot | Jamaica | E.Est; C.Cat | Real |
|-----|-----|---|--------------|-------|
| | 477 | 1902 cover to U.S.A. bearing 2½d. cancelled with the rubber h.s. "MYRTLE BANK/ JAMAICA" with part of date inserted in manuscript; 1900-01 1d. values (5) with clear part strikes of similar cancellations. (6) | 20 | 10 |
| | 478 | 1903-22 covers and F. (2) showing squared circle d.s. of Browns Town, Spanish Town, Barliston; double lined c.d.s. Montego Bay, Myrtle Bank, Petersfield and "STREET LETTER BOX KINGSTON / JAMAICA", single lined c.d.s. of Moneague and South-Field and other Registered and Machine cancellations (13) | 6 | 0 |
| | 479 | 1904 an attractive illustrated registered cover to London bearing ½d. (2), 1 d. (2) and 2½d. cancelled with the rubber h.s. "TITCHFIELD/JAMAICA" With date inserted in manuscript, ** | 8 | 15 |
| | 480 | 1910-32 covers, pieces (13) and stamps (14) all with Temporary Rubber d.s., mostly rectangular types including Direct Cable, Golden Grove, Grange Lane, Long Bay, St. Peters, Redwood, Race Course, Chalky Hill, Lucky Hill, Constant Spring, Myers Wharf, Southfield and others, mainly part strikes (29) | 25 | 15.50 |
| | 481 | 1916 covers, pieces (8) all bearing the Red Cross label, mostly in combination with current adhesives and, six off paper, with postal markings and two unused blocks of four; also the 1940 Red Cross label, an unused block and a single. (20) | 18 | 14 |
| | 482 | 1919-66 cover, card, F. and pieces (3) showing a variety of town and village c.d.s. cancellations including Hectors River, Tower Isle, Denham Town, Constant Spring, Troy, Mocho, Grange Hill and many others; mostly ** to ***. (52) | 5 | 2.50 |
| | 483 | 1920-54 covers, card, pieces (74) and stamps (10) all with whole or part strikes of Temporary Rubber d.s. covering many different villages including unframed, rectangular. oval and circular framed types, with one in red, many *** to (102) | 20 | 24 |
| | 484 | 1927-52 covers with various values showing special cancellations of the 1927 (2) and 1938 (2) Philatelic Exhibitions and 1952 Scout Jamboree, ** to ***. (5) | 5 | 2.50 |
| | 485 | 1930-55 covers all with "First Flight" cachets to various countries ex the 1930 Jamaica to Miami (5), 1932 to Dominican Republic and Haiti, 1946 to London, via Bermuda, 1949 by British Caribbean Airways, 1950 by British West Indian Airways etc. (14) | 20 | 14 |
| | 486 | 1930-50 covers, a selection, all with "First Flight" cachets including 1930 to Miami (5) and Canal Zone: 1932 to Dominican Republic: 1946 to London via Bermuda (2); 1949 to Miami and 1950 to London and Nassau. (12) | 12 | 9 |
| | 487 | 1937-56 covers card, F. and one piece bearing a variety of values and cancellations including c.d.s. of Half Way Tree, Whitfield Town, Top Hill, Petersfield, Gordon Town, Kelly, Beverley, Myrtle Bank, "STREET LETTER BOX / MONTEGO BAY", Vineyard Town and others with slogans, machine cancellations, Scout Jamboree etc, and many ** to *** (76) | 12 | 6 |
| | 488 | 1939-44 covers, mostly to U.S.A., all with Censor cachets and/or Examiners' labels including "POSTAL CENSOR / JAMAICA / PASSED". (21) | 7 | 6 |
| | 489 | 1940-45 covers and pieces (31) all with Temporary Rubber d.s. including rectangular, oval and unframed types covering 21 different villages from Allman to Treasure Beach; many ** to ***. (49) | 15 | 10.50 |
| | 490 | 1941-43 covers, a selection all with U.S. adhesives used at American bases in Jamaica including Marine Detachment at Portland Bight (4) and others with A.P.O. 804 and 861, mostly ***. (8) | 10 | 11 |
| | 491 | 1941-42 covers and cards, all to the same address in U.S.A. from German internees in Jamaica, each showing the oval d.s. "INTERNMENT & P. OF W. CAMP / JAMAICA" and various Censor cachets, mostly ***. (7) | 18 | 27 |
| | 492 | 1941-42 covers and cards to Germany and U.S.A. (5) from Germans interned in Jamaica showing oval d.s. "INTERNMENT & P. OF W. CAMP/JAMAICA" and various Censor cachets, mostly *** (6) | 18 | 13 |

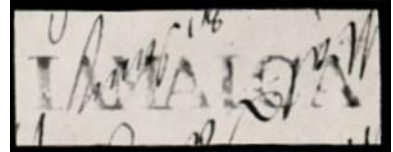
Robson Lowe Sale of The William Britton Stitt BWI Collection, 12 May 1970

| img | Lot | Jamaica | E.Est; C.Cat | Real |
|-----|-----|---|--------------|-------|
| | 493 | 1942-46 covers and letter sheet, mostly to U.S.A. from Germans (4) and an Italian interned in Jamaica showing the oval framed "INTERNMENT & P. OF W. CAMP/ JAMAICA" (4) and "INTERNMENT CAMP/CHECKED NO. I/JAMAICA" and other Censor cachets; mostly ***. (5) | 15 | 10 |
| | 494 | 1945-67 covers, cards and two pieces, a selection of the oval Temporary Rubber d.s. covering villages from Aboukir to Grove Town; mostly *** with very little duplication. (88) | 15 | 19 |
| | 495 | a very similar lot [1945-67 covers, cards and pieces] covering villages from Hagley Park to Nine Turns. (89) | 15 | 10.50 |
| | 496 | - another similar lot [1945-67 covers, cards and pieces] covering the remaining villages from Old Bottom to Yarmouth. (82) | 15 | 10.50 |
| | 497 | 1952-57 (c.) K.G. VI 1½d. (4), 2d. (33) and 6d. (96) and Q.E. II 1d. (59) with cancellations covering almost 100 different towns and villages. (158) | 5 | 2.50 |

Images



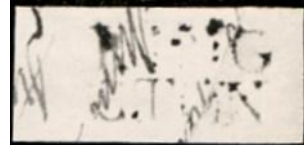
331



334



335



336



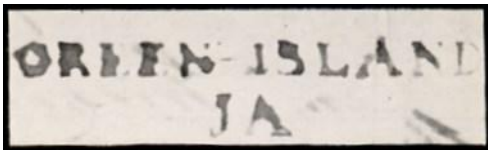
337



338



351



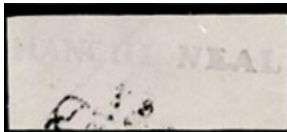
353



355



359



360



364



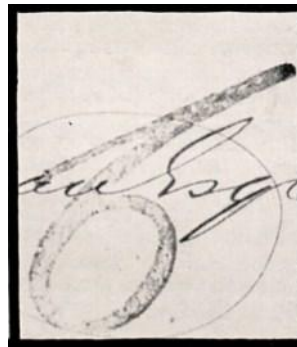
368



369

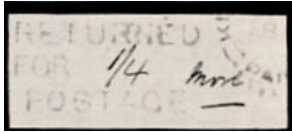


372

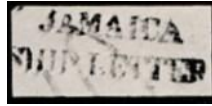


375

Robson Lowe Sale of The William Britton Stitt BWI Collection, 12 May 1970



378



380



381



388



389



390 Ex



391



399



401



402



403



404



405

Robson Lowe Sale of The William Britton Stitt BWI Collection, 12 May 1970



406



407



408



415



416



423 Ex



424



427



428



430



432



433



435



440 Ex



443



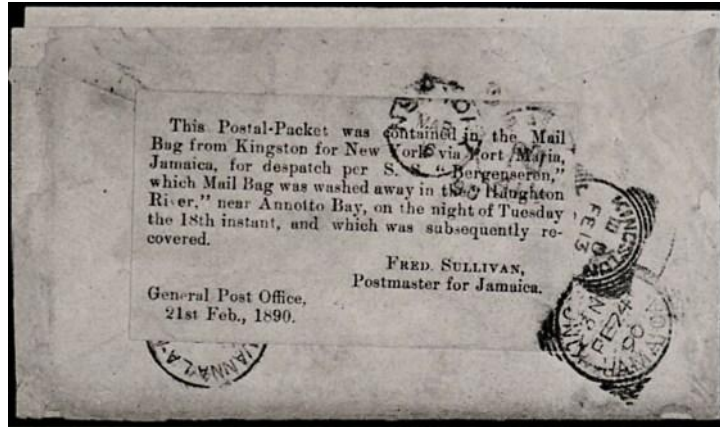
444



449



451



467