

British Empire featuring GRENADA

11-12-13 OCTOBER 1978



339



56



377



253



367



370



373



387



422



678



772



1205



1373

Stanley Gibbons Auctions

Image	Lot	type		Est	Real
	635	cover	1799 Oct. 4, E.L. from Albion Estate, St. Thomas, to Edinburgh, showing on reverse fair 2-line "JAMAICA/8 Oct. 99" (J4) and London arrival marking of December; repaired and somewhat soiled.	£36	26
	636	cover	1804 Dec. 1, E.L. from Dundee Estate, Trelaway, to Edinburgh, on reverse fair 2-line "JAMAICA/2 Dec. 1804" (J7), the last date recorded by Foster; poor S/L "FALMOUTH". Edinburgh Feb. 8th arrival mark; vertical fold	£46	34
	637	cover	1809 April 29, E.L. from Spanish Town, S/L SPANISH TOWN -JA (fair only), addressed to Dundee, Edinburgh handstrike of June 1 1 th 1 809 applied; some creasing and age soiling	£32	23
	638	cover	1814 March 11, E.L. showing on reverse fair Jamaica Fleuron (F3a), various m/s markings, addressed to Gainsborough, no other markings; general age toning; wrapper repaired	£54	42
Plate 17	639	cover	1822 Dec. 12, E.L. with fine 2-line COMMERCIAL ROOM /KINGSTON JAMAICA, Liverpool step-type Ship Letter, "Additional 1", Glasgow transit, addressed to Greenock; above average	£120	105
	640	cover	1815 Dec. 26, E.L. from Orange Hill Estate, Manchioneal to New Galloway, fair only Jamaica Fleuron on reverse; various m/s. markings; letter concerns sale of slaves, etc.; an interesting item; some tears and age stains	£48	34
	641	cover	1820 March, accounts wrapper with very fair Manchioneal S/L cancel across flap, small Jamaica Fleuron (F6), Ayr arrival marking of 19th April; vertical crease, some age staining	£44	32
	642	cover	1845 Jan. 6 E.L. posted at Vere to Aberdeen, with above average "VERE" handstrike, c.d.s. on reverse, various transit markings, Aberdeen arrival of Feb. 13th; scarce	£46	34
	643	cover	1849 April 20, E.L. showing on reverse good strike of "OLD HARBOUR" c.d.s. (P2b), scarce, also marks of Kingston, London and Wigton; horizontal cover folds; some age staining; a good combination of strikes	£32	23
	644	cover	1867 March 27, E.L. with indistinct green island c.d.s., fine double-arc "JAMAICA/Pd. 5" handstrike; two other markings incl. Liverpool arrival of April 1 3 '67; tears and soiled; scarce	£115	85
	645	cover	1870 July 5 E.L. to U.K., poor Jamaica Fleuron on reverse, redirected on arrival; some tears, ageing and staining	£22	17
	646	piece	1879 March 11, part wrapper with sides cut off, with 6d. (S.G. 12) tied by "A75" numeral cancel of "SAVANNA-LA-MAR" c.d.s., addressed to London, Kingston transit and London arrival 29th March 79; good appearance	£36	32
	647	cover	1844 Jan. 20, wrapper with Jamaica "PAID" Type PD5, also on reverse double arc "PORT MARIA" c.d.s., addressed to London with Feb. 1844 arrival markings; some tears; repaired	£26	24
Plate 18	648	used	G.B. Used in Jamaica: 1855-57 6d. pale lilac, used with part Spanish Town, Jamaica, Feb. 21 c.d.s.; B.P.A. Cert. (1977); remarkable and unique	£180	125

Image	Lot	type		Est	Real
	649	piece	G.B. Used in Jamaica: 1857 4d. tied to piece by "A78" of Vere (S.G. J177), also double circle cancel of Kingston, Oct. 22 1859; some tears clear of adhesive; scarce	£125	95
Plate 19	650	proof	1860-63 2d. in black on glazed card, "After Striking", dated Sept. 7-60, corner crease and crack at top (both clear of design)	£125	100
Plate 19	651	proof	1860-63 6d. in black on glazed card, "After Hardening /and /Before Striking", above average.	£125	115
Plate 19	652	proof	1870-83 ½d. in black on glazed card, "Before Hardening", July 30, 1872	£125	100
	653	mint	1870-83 1d. deep blue (S.G.8a), block of 8 (4 v 2), fine colour, right-hand pair with vertical crease, corner crease top left, hinge remainders, reinforced, scarce	£56	60
	654	mint	1870-83 2/- Venetian-red block of 10, (S.G. 14), horizontal crease on 4th pair, hinge remainders top and bottom pair otherwise unmounted o.g.	£100	105
	655	mint	1870-83 5/- (S.G. 15), fresh, part o.g., gum disturbance, few short perfs., tiny spot top right	£22	17
(Plate 15)	656	essay	1883-97 2/- hand-drawn essay in mauve and red on thick card, 70mm. X 80 m., dated "Nov. 23rd '87" and lettered "B", initialled "E.E.B." all in m/s.; this design was adopted for the keyplate issue; ink stain bottom right well clear of design; unique	£1,000	800
Plate 18	657	mint	1883-97 4d. red-orange (S.G. 22), good colour, vertical gum wrinkles, faint mark on reverse, fresh part o.g.	£70	90
Plate 15	658	proof	1903-04 ½d. four imperf. trials in purple and red, green and red, black and red on red, black and blue on blue, stuck to piece, the left-hand vertical pair affected by crease, top left trial with some surface markings, but attractive and rare	£190	190
Plate 18	659	proof	½d. Imperf. Colour trial in purple and blue on C.A. wmk'd. Paper, fresh part o.g.	£60	50
Plate 15	660	essay	1905-11 Composite Essay of the Redrawn ½d, Arms design on thick card, 65mm. /, 65mm. approx., with hand-painted frame, "June 30 1905" in m/s. in ink, "Approved" in pencil on reverse; rare and possibly unique	£700	500
	661	mint	1905-11 Q.V. types, 3d. to 2/- (S.G. 45-56), mostly fresh, few light overall tones, part o.g.	£50	40
	662	mint	1916 (April-Sept.) War Tax, ½d. "ovpt. inverted" (S.G. 68c), marginal block of 4, mounted at top only, scarce	£60	62
	663	mint	1917(March) War Stamp, 1½d., "wmk. inverted" (S.G.74var.), block of 4, usual light gum creases, unmounted o.g. or o.g.	£36	29
	664	mint	1½d. "ovpt. inverted" (S.G. 74d) left-hand marginal, fresh part o.g.	£18	20
	665	mint	3d. "ovpt. inverted" (S.G. 75c), fresh, few age spots on reverse, part o.g.	£36	38
Plate 15	666	proof	1919-21 die proof for the 4d. value vignette in sepia on stout paper, showing central lines, a few trifling printer's marks clear of design; attractive and scarce	£60	60
Plate 15	667	essay	1919-21 5/-, composite essay with photographic frame and hand-painted vignette, frame has been touched-up by hand in places; sunk into thick card, with m/s. 30 Aug. 20, and "Approved/ W.A.M./9/9/2a" both in ink; possibly unique	£850	700
	668	mint	5/- blue and yellow-orange (S.G. 88), fresh part o.g.	£18	19

Image	Lot	type		Est	Real
Plate 21	669	proof	1921-29 1d. die proof of the frame in black on glazed card, with m/s. "28.1 .22" in pencil	£80	80
Plate 18	670	proof	6d. plate proof of the central vignette in blue on thick paper	£46	38
Plate 18	671	proof	1929 (circa), proof of K.G.V Head in black on wove paper approx. 28mm. x 50mm., paper fold above head, a little soiled, scarce	£70	50
	672	cover	1941 P.O.W. card sent by German internee to London, with fair oval Camp handstrike in violet, Postal Censor/Jamaica/Passed/(5) in violet, and London local slogan cancel; fine	£20	14
	673		Coll. in S.G. One-Country album and two small approval books, 1890-97 range, 1903-04 to 5d., 1905-07 Arms to 5/- (less 1d. on 5d.), 1905-11 Q.V. range to 2/-, 1912-17 to 5/-, War Tax complete; one small approval book contains 30 stamps with wmk. inverted, no sap, inverted S, small P, in all about 20 varieties, 1919-21 to 10/-, 1921-29 to 10/-; small booklet containing 11 stamps, values to 5/- (2) with 1 '2d. wmk. inverted (2), various shades, 1932 Welfare set, 1 938-52 sets, to 1 955 Terc.; earlier issues mixed, later stamps mostly fine, fresh 98 o.g.; 32 used	£180	190
Plate 21	674	proof	Postal Fiscal. 1865-71 1d. die proof in black of issued stamp (as S.G. F1), "After Striking" and "Feb. 2, 1865" handstrike, and initialled "W.H." in ink; rare	£190	100

PLATE 15

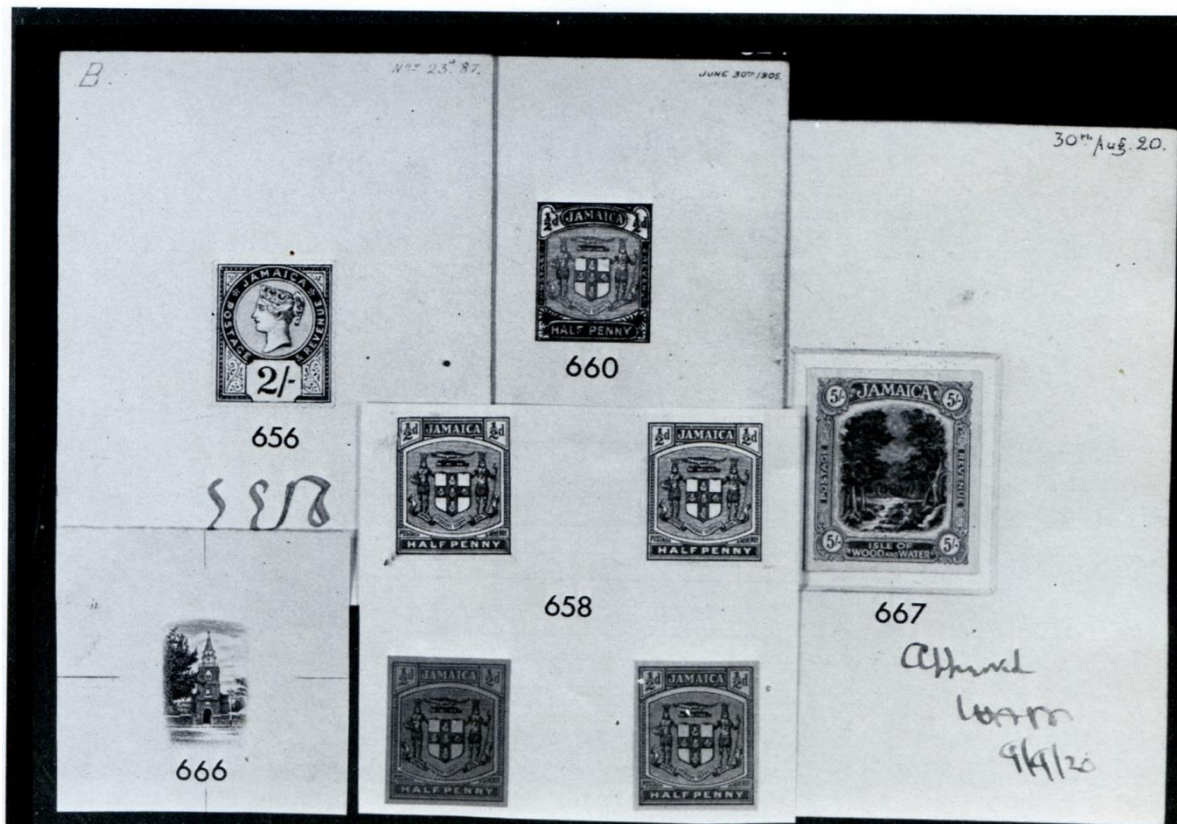


PLATE 17

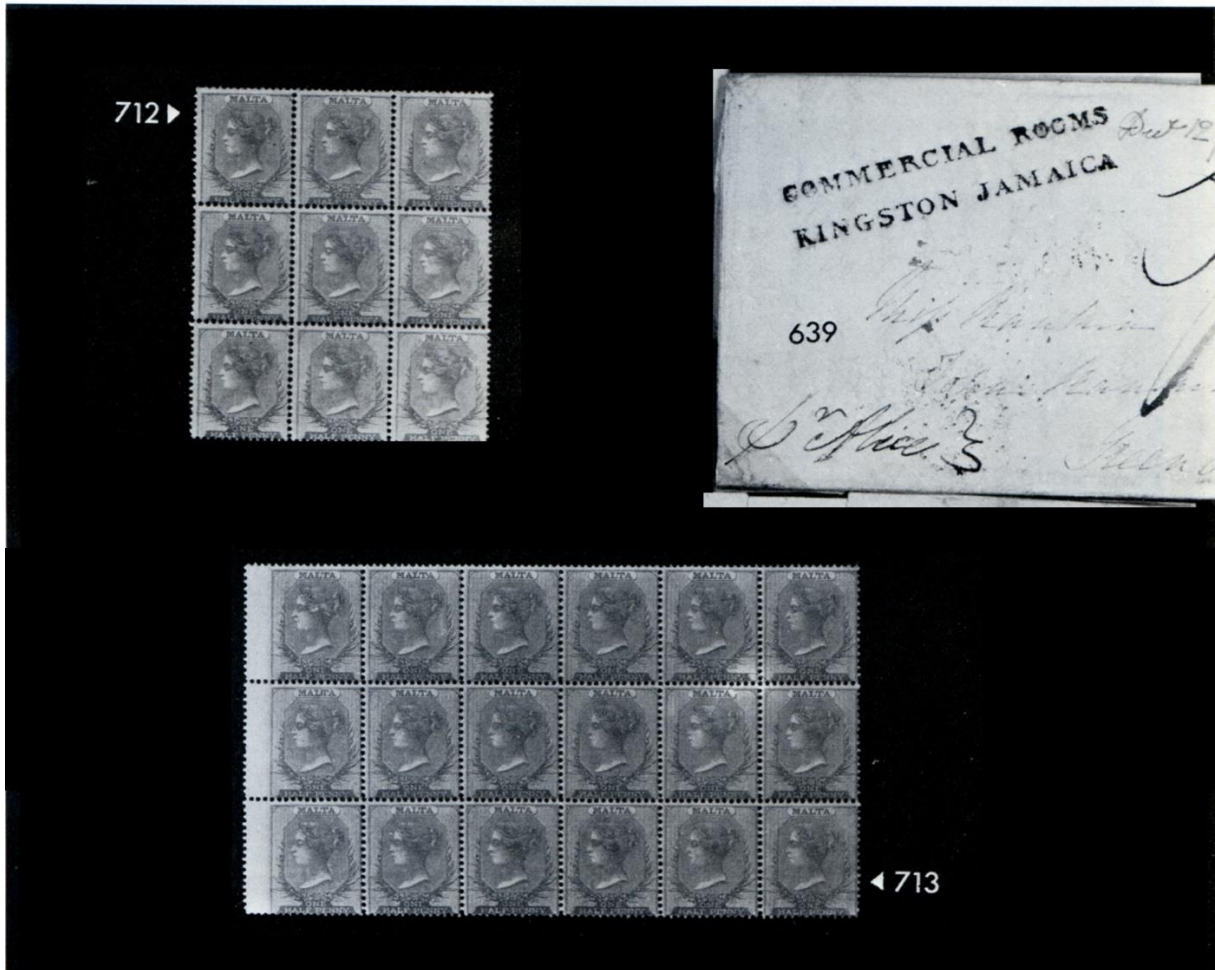


PLATE 18



PLATE 19



PLATE 21

